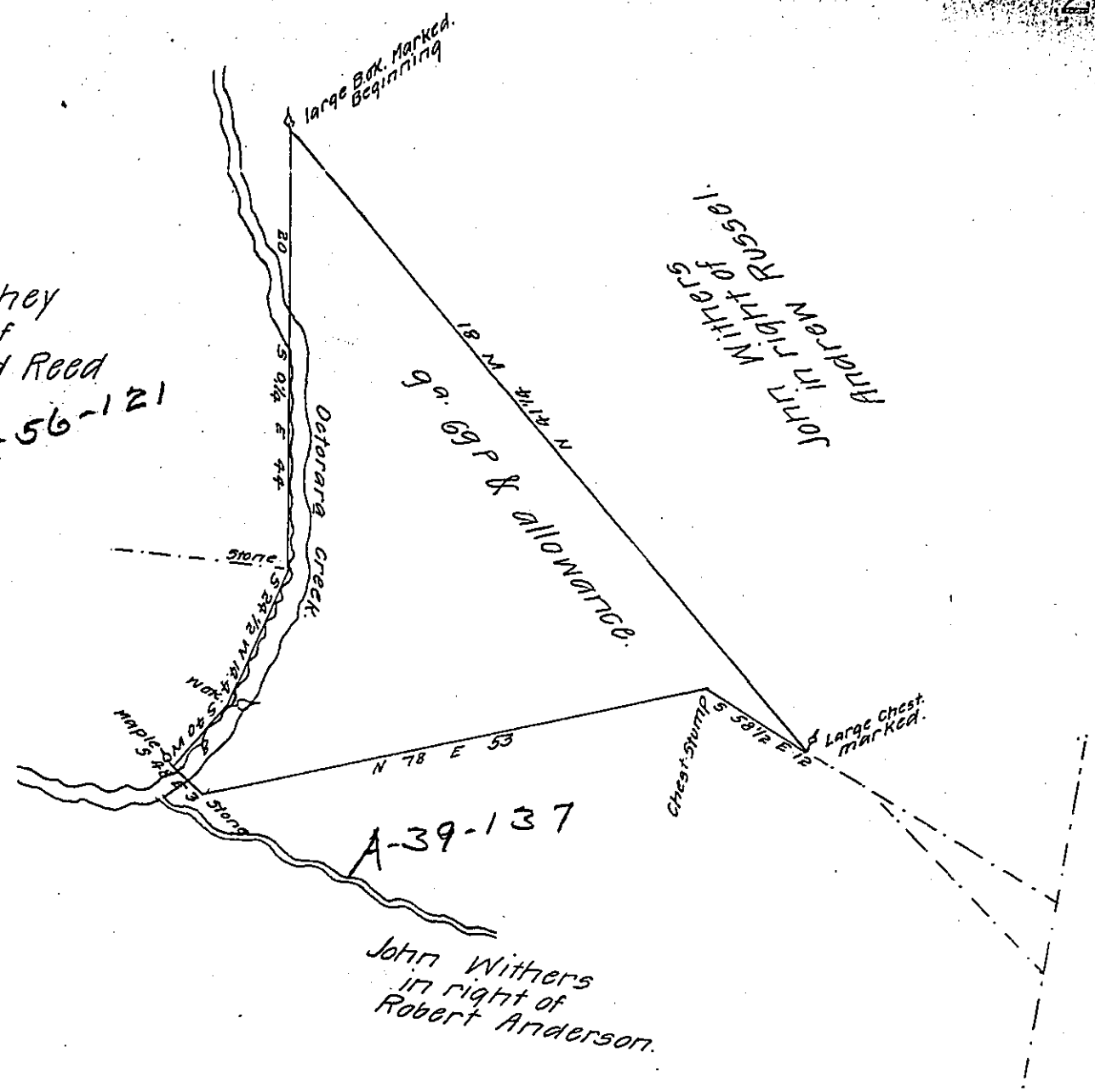


FORM NO 1.

John Caughey
in right of
Geo. & David Reed
A-56-121



JOHN WITHERS
in right of
Andrew Russell

John Withers
in right of
Robert Anderson.

The above Draught contains 9 acres & 69 perches and
the usual allowance of six per cent for roads &c. of unproved
land Situated part in Bart and part in Colerain townships
Lancaster County Surveyed in pursuance of a warrant granted
to Peter Neidich dated February 27th 1841.

Surveyed April 7th 1841.

By James Calwell. D.S.

To Jacob Sallade Esqr.
Surveyor General of Penn^a.

IN TESTIMONY that the above is a copy of the original remaining on file in
the Department of Internal Affairs of Pennsylvania, made
conformably to an Act of Assembly approved the 16th day of
February, 1833, I have hereunto set my Hand and caused
the Seal of said Department to be affixed at Harrisburg,
this twelfth day of December 1907.

Henry Howell
Secretary of Internal Affairs.